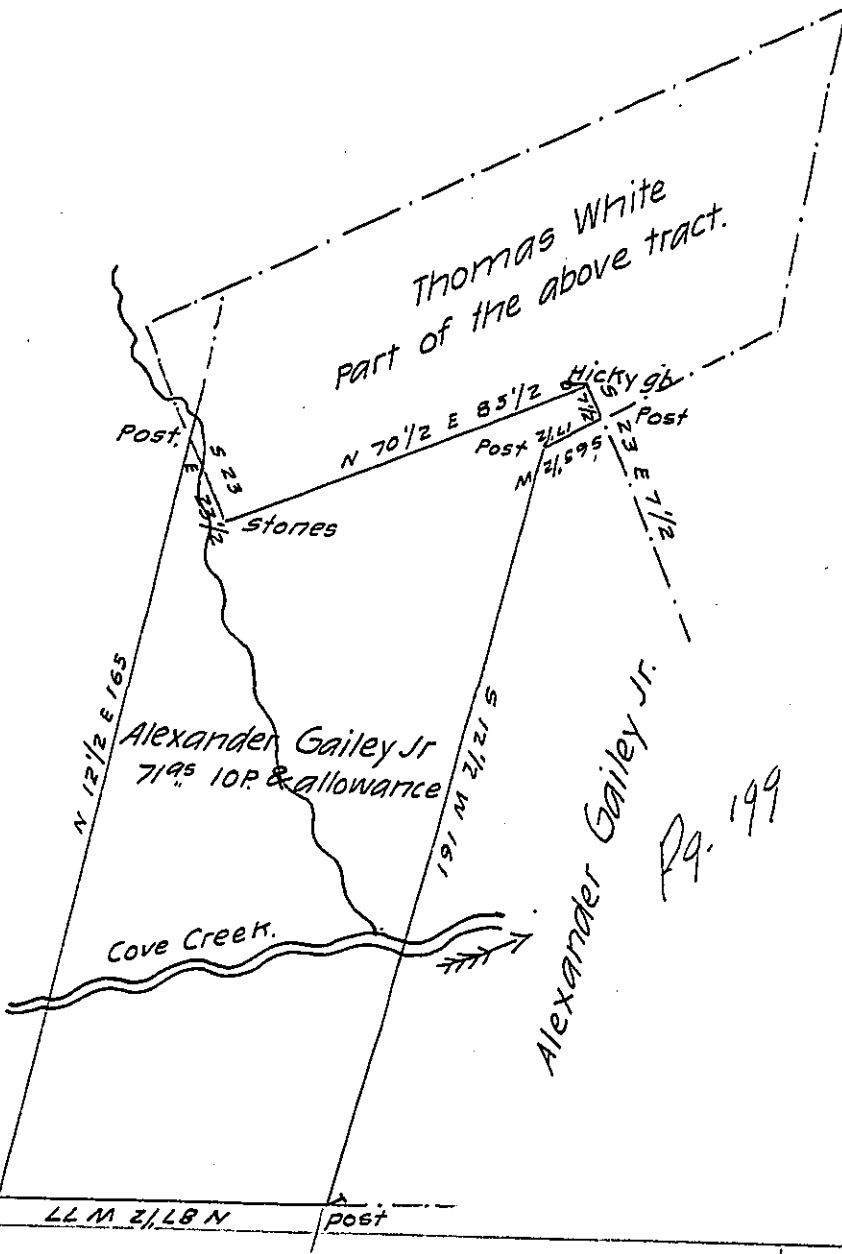


Alexander Gailey Jr.



Alexander Gailey Senr
part of said tract.

Draught of land
situate in Rye Township
Perry County containing
Seventy one acres ten per-

ches & allowance of six per Cent for roads &c. Part of 220^{ac} 20^P Originally Sur-
veyed in pursuance of a warrant granted to Alexander Gailey dated February
the 24th 1786. Surveyed the above part for Alexander Gailey Jr. to patent
August the 28th 1835.

R. Wm Wilson D.S.

Jacob Spangler Esq. S.G.

IN TESTIMONY that the above is a copy of the original remaining on file in
the Department of Internal Affairs of Pennsylvania, made
conformably to an Act of Assembly approved the 16th day of
February, 1833, I have hereunto set my Hand and caused
the Seal of said Department to be affixed at Harrisburg,
this...twentieth...day of...December...1904

Jacob P. Brown
Secretary of Internal Affairs